

RONDA **startech** Cal. 5030.D

User's Manual

- Brief specifications 16
- Description of the display and control buttons 17
- Setting the time / date 18-21
- Operation of the chronograph 22-27

In case your watch needs to be repaired or to raise claims under a guarantee, please contact the point of sales



Brief specifications

Time/Date

- Hour hand
- Minute hand
- Small second hand (position 3h)
- Date (position 4h)

Chronograph

- Hour counter up to 12 hours (position 6h)
- Minute counter up to 30 minutes (position 9h)
- Centre stop-second

General

- Battery type: 395 (diameter 9.5mm x 2.6mm / SR 927 SW)
- Accuracy: +20 / -10 seconds per month

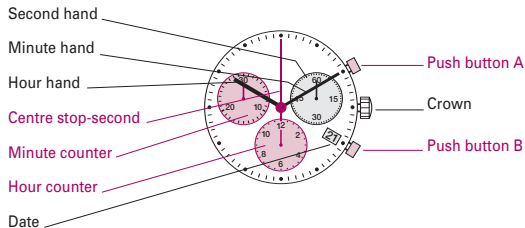
Description of the display and control buttons

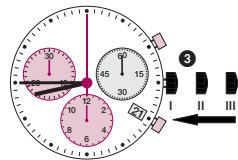
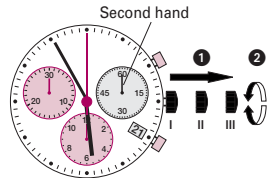
Display elements

- Second hand
- Minute hand
- Hour hand
- Centre stop-second
- Minute counter
- Hour counter
- Date

Control buttons

- Push button A
- Crown
- Push button B



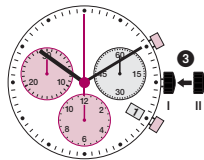
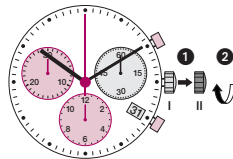


Setting the time

- 1** * Pull out the crown to position **III** (the watch stops).
- 2** Turn the crown until you reach the correct time **8:45**.
- 3** * Push the crown back into position **I**.

Please note:

* In order to set the time to the exact second, **1** must be pulled out when the second hand is in position «60» (I).
Once the hour and minute hands have been set, **3** must be pushed back into position I at the exact second.

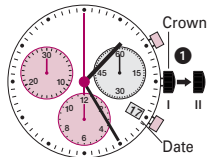


Setting the date (quick mode)

- 1** Pull out the crown to position **II** (the watch continues to run).
- 2** Turn the crown until the correct date **1** appears.
- 3** Push the crown back into position **I**.

Please note:

During the date changing phase between 9 PM and 12 PM; the date must be set to the date of the following day.

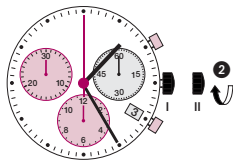


Setting the date/time following a battery change

Example:

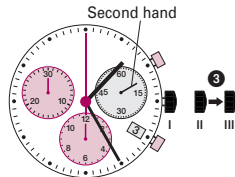
- Date / time on the watch: **17** / 1:25 AM
- Present date / time: **4** / 8:30 PM

- 1** Pull out the crown to position II (the watch continues to run).



- 2** Turn the crown until yesterday's date appears **3**.

20

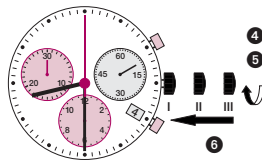


- 3*** Pull out the crown to position III (the watch stops).

- 4** Turn the crown until the correct date **4** appears.

- 5**** Continue to turn the crown until the correct time 8:30 PM appears.

- 6** Push the crown back into position I.



Please note:

* To set your watch to the exact second, please refer to the chapter entitled «setting the time».

**Please observe the AM/PM clock rhythm.

21

Chronograph:

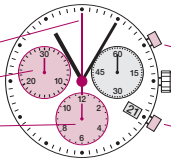
- The chronograph's **hour counter** measures times up to 12 hours.
- The **minute counter** measures 30 minutes per rotation.
- The **center stop-second** measures 60 seconds per rotation..

Display elements

Centre stop-second

Minute counter

Hour counter



Control buttons

Push-button A
(Start / Stop)

Push-button B
(Reset)

Please note:

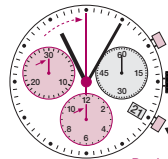
Before using the chronograph functions, please ensure that:

- the crown is in **position I** (= normal position).
- the 3 chronograph hands are precisely at zero position following activation of **push-button B**. Should this not be the case, the positions of the hands must be adjusted (see the chapter entitled «adjusting the chronograph hands to zero position»).

Minute counter Push-button A



Hour counter



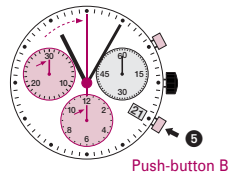
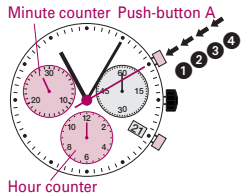
Push-button B

Chronograph: Basic function

(Start / Stop / Reset)

Example:

- 1 Start:** Press push-button A.
- 2 Stop:** to stop the timing, press push-button A once more and read the three chronograph hands: **1h / 20min / 10 sec.**
- 3 Zero positioning:** Press push-button B. (The three chronograph hands will be reset to their zero positions).



Chronograph: Accumulated timing

Example:

- 1 **Start:** (start timing)
- 2 **Stop:** (e.g. 15 min 5 sec following 1)
- 3 **Restart:** (timing is resumed)
- 4* **Stop:** (e.g. 13 min 5 sec following 3)

= 28 min 10 sec

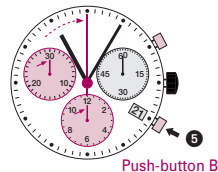
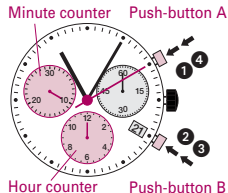
(The accumulated measured time is shown)

- 5 **Reset:** The three chronograph hands are returned to their zero positions.

Please note:

* Following 4, the accumulation of the timing can be continued by pressing **push-button A** (Restart / Stop, Restart / Stop, ...)

24



Chronograph: Intermediate or interval timing

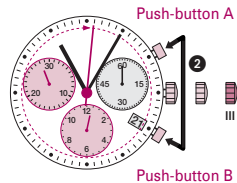
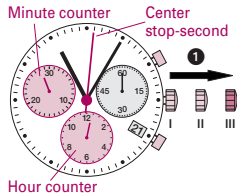
Example:

- 1 **Start:** (start timing)
- 2 **Display interval:** e.g. 10 minutes 10 seconds (timing continues in the background)
- 3 **Making up the measured time:** (the 3 chronograph hands are quickly advanced to the ongoing measured time).
- 4 **Stop:** (Final time is displayed)
- 5 **Reset:** The 3 chronograph displays are returned to their zero position

Please note:

* Following 3, further intervals or intermediates can be displayed by pressing **push-button B** (display interval / make up measured time, ...)

25



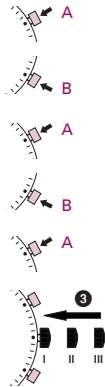
Adjusting the chronograph hands to zero position

Example:

One or several chronograph hands are not in their correct zero position and have to be adjusted (e.g. following a battery change).

- 1 Pull out the crown to position III (all 3 chronograph hands are in their correct or incorrect zero position).
- 2 Keep push-buttons **A** and **B** depressed **simultaneously** for at least 2 seconds (the centre stop-second rotates by 360° → corrective mode is activated).

26



27

Adjusting the centre stop second

Single step ↙ A 1 x short
 Continuous ↙ A long

Adjusting the next hand B

Adjusting the hour counter hand (position 6h)

Single step ↙ A 1 x short
 Continuous ↙ A long

Adjusting the next hand B

Adjusting the minute counter hand (position 9h)

Single step ↙ A 1 x short
 Continuous ↙ A long

3 Returning the crown to position I

Termination of the chronograph hands adjustment (can be carried out at any time).